

VISUAL
APPROACH
CHART

AD ELEV 174FT
VAR 5°E (2020)

APP 120.225
129.875
TWR 125.550

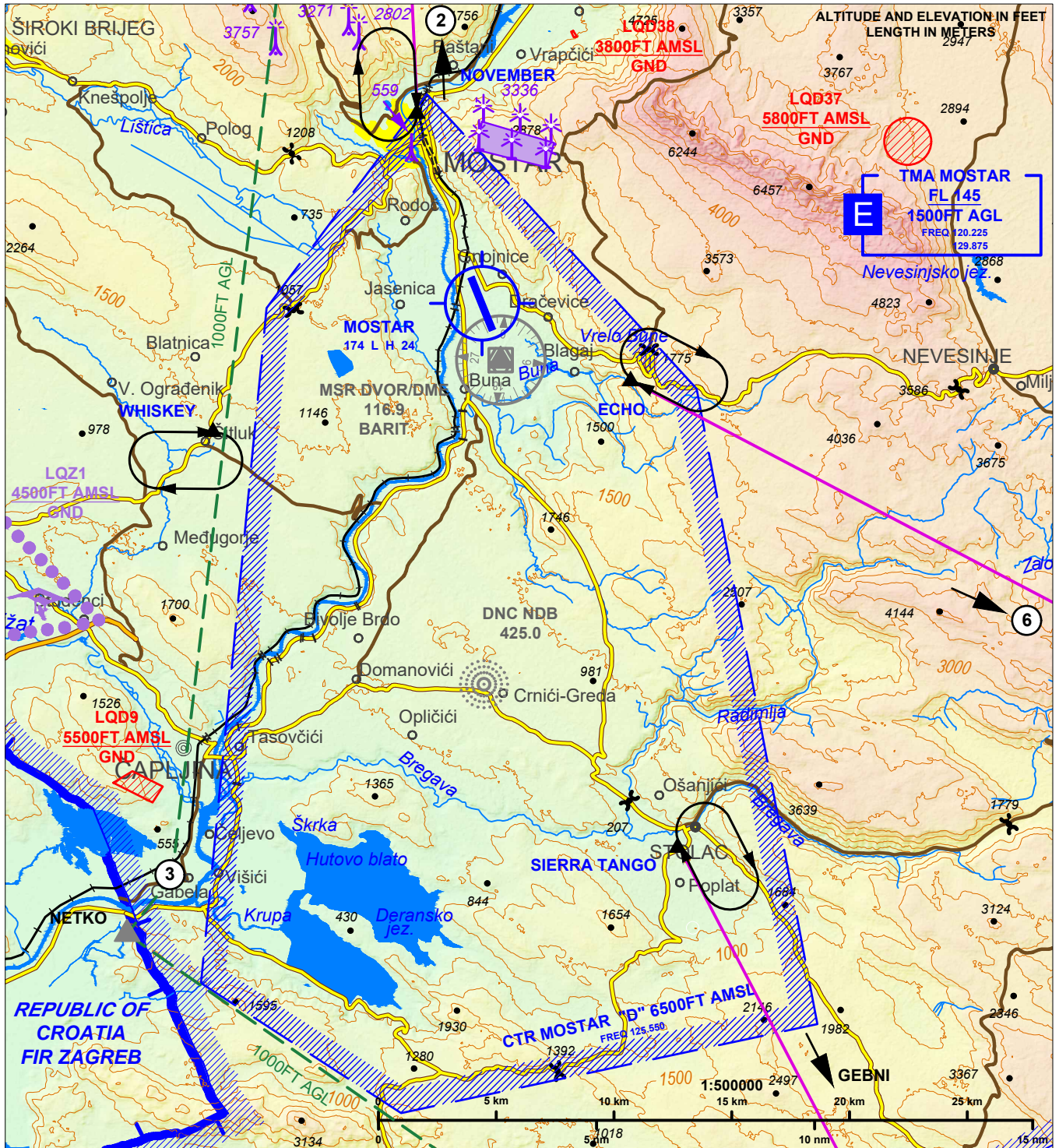
FIG 135.575
ATIS 126.225

TA
10000FT

ARP COORD
43° 16' 58.44" N
017° 50' 45.16" E

MOSTAR (LQMO)

CHANGE: ADDED WINDFARM, ADDED OBSTACLES, REMOVED NDB MA, VOR MSR COMPASS ROSE ORIENTED TO MAG NORTH, ADDED FREQUENCIES ON THE CHART



REPORTING POINTS	COORDINATES	DEFINITION
NOVEMBER	43° 21' 22" N 017° 48' 43" E	Railway station MOSTAR
ECHO	43° 15' 13" N 017° 55' 25" E	BLAGAJ
SIERRA TANGO	43° 04' 32" N 017° 56' 55" E	STOLAC
WHISKEY	43° 14' 04" N 017° 42' 20" E	ČITLUK

Two way radio communication mandatory. Contact Tower at or before reporting point. For latest informations consult relevant publications and NOTAMs.

Special VFR minima:
VIS ≥ 1500M (FIXED WINGS), 800M (HEL); ceiling ≥ 500FT

REMARK:
Traffic pattern for fixed wing aircraft only available West of RWY due to high terrain. For helicopters both traffic patterns available.

CAUTION:
Power lines and obstacles are not shown.

ATTENTION:
Bird concentration on and in the vicinity of RWY. Caution advised for N, E and ST holding patterns due to high terrain.

THIS PAGE INTENTIONALY LEFT BLANK